



Fire exit only  
Caution  
This door is alarmed



and this sign is an alarm  
Thank you for not enter

DON'T  
PANIC

BEER  
MATTERS



ISSUE 470 - DEC 2016/JAN 2017

 @shfCAMRA  /sheffieldcamra

# THE WELLINGTON

The Neepsend Brewery tap-now open



MON-THURS: 3:00pm to 11:00pm  
FRI+SAT: 12:00 noon to 12:00 midnight  
SUN: 12:00 noon to 11:00pm

*No.01 Henry Street,  
next to the Shalesmoor tramstop.*

0114 249 2295



# NEEPSEND

◆◆ — BREW CO — ◆◆



@neepsendbrewco

@thewellingtonsheffield



**3,500 MONTHLY  
CIRCULATION**

## EDITOR

Andrew Cullen

[beermatters@sheffieldcamra.org.uk](mailto:beermatters@sheffieldcamra.org.uk)

Articles, letters and suggestions  
are most welcome so please  
send them in\*

## ADVERTISING

Paul Crofts

[advertising@sheffieldcamra.org.uk](mailto:advertising@sheffieldcamra.org.uk)

**Quarter Page** £40+VAT

**Half Page** £60+VAT

**Full Page** £90+VAT

**Inside Cover** £100+VAT

**Back Cover** £110+VAT

Discounts for regular placements

PDFs or high-res (300 dpi) bitmaps  
only please

**Design** from £30

**Updates** from £10

**NEXT COPY DEADLINE**  
**Friday 6th January**

Opinions expressed are those of the author  
and may not represent those of CAMRA,  
the local branch or editor. Beer Matters is  
© CAMRA Ltd.

\*For legal reasons a full name and address  
must be provided with all contributions.

## THE FREE MAGAZINE OF CAMRA SHEFFIELD & DISTRICT

ISSUE 470 - DEC 2016/JAN 2017

### NEWS

4

ACV Update

Good Beer Guide 2018

### BREWERIES

5

Blue Bee

Stancill

Sheffield Brewery Co.

Abbeydale

Steel City

Jolly Boys

Emmanuales



### PUBS

10

Britain's Best Real Heritage Pubs

Bar Stewards

Norfolk Arms

Pub Heritage - Lescar

Gardeners Rest

Old Crown

Blue Stoops

Hallamshire House

Local Taps

Peaks Pub Tour

A Grand Day Out



### AWARDS

23

### FESTIVALS

24

Another fine fest you got us into  
2017 - Help make the magic  
Festival Guide



### DIARIES

28

### COMMITTEE

30

## ACV UPDATE

**University Arms ACV rejection – no meeting with SCC.** In late September, Sheffield City Council (SCC) refused our application to register the **University Arms** as an Asset of Community Value. The decision then was 'called-in.'

Our Chair and myself attended the Scrutiny Committee 20th October. The ACV rejection decision remained unchanged. However, we posed a series of six questions. In the meeting Ccl.Jack Scott, the SCC Cabinet Member for Community Services and Libraries, agreed to respond to our questions, in writing, within a week and

also agreed to meet with ourselves. Such a meeting was originally promised in an email to ourselves dated 3rd.October.

A written response from SCC finally arrived on 9th. November. However, despite reminders, at the time of writing, almost five weeks after the initial promise, no meeting has been arranged. SCC have not suggested a date/time or venue. They seem reluctant to meet with ourselves.

There are currently two other ACV applications for pubs with SCC, both lodged by local community groups: **White Lion**, London Road – a decision was due on 3rd. November and **Cherry Tree**, Carterknowle Road – decision due 2nd.December

The planning application to alter the ACV-listed **Plough** (Crosspool) into a Sainsburys received 157 responses from the public (151 against). SCC have yet to make a formal decision, although this was

due in late October

In short, SCC are not keeping to legal deadlines, seem to be interpreting the rules in their own manner and do not seem to wish to meet with interested parties.

## GOOD BEER GUIDE 2018

As a member of our branch you get to vote on which pubs get put forward to be in the next edition of the Good Beer Guide.

The process starts this month with voting, then in the new year the pubs that have been voted for are surveyed by members before

being submitted to the campaign for inclusion.

We also take into account beer scores submitted via [whatpub.com](http://whatpub.com).

Send your completed form (from the link below) to [potm@sheffieldcamra.org.uk](mailto:potm@sheffieldcamra.org.uk) or post it to the address on the form by 31 December.

[sheffieldcamra.org.uk/GBG2018vote.pdf](http://sheffieldcamra.org.uk/GBG2018vote.pdf)

**REET PIZZA**  
@The Punchbowl,  
236 Crookes

**Two pizzas and a bottle of house wine for £18.99**  
Or buy any pizza and get a pint of Reet Pale for £1.25  
**Monday to Wednesday**

Quiz every Thursday from 8pm, Free entry £20 bar tab and other prizes for the winners, runners up and losers

**Fresh 12" pizzas and salads**  
**8 handpulls - Box cider**  
**Craft beer - Continental lager**

**We're in the Good Beer Guide 2017**  
(Come and tick us off)

**GOOD BEER GUIDE 2017**

**THE PUNCHBOWL**

**EMAIL** [THEPUNCHBOWL@HOTMAIL.COM](mailto:THEPUNCHBOWL@HOTMAIL.COM)  
**F** [PIZZAPUNCHBOWL](https://www.facebook.com/pizzapunchbowl) OR **T** [@REETPIZZA](https://twitter.com/REETPIZZA)  
**PHONE** 0114 267 1052





## BLUE BEE

As the festive season begins we keep ploughing forward with new specials non of which are particular festive (bah humbug). The first of which is yet another in our series of Geek beers which always uses what has to be our favourite hop

Mosaic. We have showcased this American hop in **Voyage Geek** 5.0% which is an IPA that has big tropical, grapefruit and pine like flavours leading to a dry finish.

On top of this we have brewed **Dana Pale** 3.9%.

A crisp, refreshing, session pale which is the first beer we have brewed using Slovenian hops, Dana is used to give lemon and pine flavours with a floral finish.

As well as this we have brewed our first Black IPA

for a while this time using plenty of New Zealand hops. **All Black IPA** 6.0% combines Motueka, Orbit, Pacific Jade and Pacific Gem to give a big fruity hop flavour backed up by a roasted malt body.

**The Red Deer**  
 18 Pitt St S1 4DD 0114 2722890

9 lovingly kept cask ales  
 home made food served daily  
 square hole comedy  
 unique quiz  
 fantastic live music  
 lively friendly atmosphere

Portobello, Orange Street, Pitt Street, Portland Lane, Charlotte Lane, West Street, Supertram-West Street, Ebson Street.

Facebook, Twitter, and a logo for The Red Deer.



## STANCILL

Christmas comes but once a year and to celebrate, Sheffield's Stancill Brewery has produced a trio of seasonal festive specials to enjoy by the fireside in your local, bringing together flavours from Christmas past, present and future!

**Blizzard** is features the classic characteristics of everything that's great about a Stancill brew; a smooth, sweet and malty pale ale which is golden in colour and complimented with a creamy white head. If you do happen to get

stuck in a blizzard, this is what you would want in your belly to warm you up!

Meanwhile, **Red Velvet** is a the epitome of a festive brew. Rich, fully flavoured and full bodied. The strong spicy and winter berry notes are contrasted with milk chocolate and cocoa – all the scents of Christmas rolled into one! With an ABV of 6.0% it's guaranteed to keep Jack Frost away from your door and fill you with festive spirit.

In stark contrast, **Mistletoe** is arguably one of the most unusual beers produced by Stancill Brewery. The pale, hoppy beer is refreshing with hints of lime and citrus flavours. A cheeky beer, filled with festive cheer. One kiss of your glass and you're sure fall in love with it. Did we mention it's also a festive green colour?

Stancill's range of festive beers will be available at selected pubs across the city throughout December including The Horse & Jockey and Norfolk Arms. And if that wasn't a good enough reason to celebrate Christmas with a Stancill beer, don't forget CAMRA members will receive a 20% discount, making a pint of Stancill beer just £2.00 a pint.

How's that for spreading good festive cheer?!

On behalf of all the Stancill Brewery team, we'd like to wish you a very Merry Christmas and happy and enjoyable 2017.



## SHEFFIELD BREWERY CO

It's the most wonderful time of year to live in Sheffield. There's nowhere more magical than walking down Fargate during the festive season, savouring the smell of roasted chestnuts, enjoying the hearty brass bands of Yorkshire, and taking in the fairy lights hanging from the Christmas trees.

We end our tenth year celebrations this month with our final Ten of the Best range special: **Ginger Secret Santa** is a full bodied, winter warming, chocolate ginger bread stout celebrating Sheffield at Christmas. Mashed with a variety of speciality malts and more packets of ginger nuts than you can cram into a stocking, **Ginger Secret Santa** is Christmas in a pint glass.

It doesn't stop there with the celebrations! This Christmas, you can purchase a selection of The Sheffield Brewery Company beers in 500ml bottles. Beers on offer are *Seven Hills* (4.1% Pale Ale), *Millowner's Ale* (4.3% Best Bitter) and new comer *Brunswick Black* (3.4% Porter). Gift packs are available from [sheffieldbrewery.com](http://sheffieldbrewery.com) with collection from the brewery, or down your local bottle shop.

**ARTISAN TAP THE SHIP INN**

Monday - £2.95 all our bottled beer and cider  
 Tuesday - Jam Night at 8.30pm  
 Wednesday - Quiz Night at 8pm, prizes to be won!  
 Thursday - All handcrafted cocktails £5, all day!  
 Friday - 25% off all wines and bubbly 5-8pm  
 Sunday - Live music starts at 5pm

"Old Golden Hen" £1.95 a pint all day Tuesdays!

120" screen for sport!

25% off all real ale

The Ship Inn, 312 Shalesmoor, Sheffield, S3 8UL  
 0114 275 6231



## ABBEYDALE

That time of year already! It's going to be a storming end to 2016 for us here at Abbeydale as by the time you read this the new artwork for our core beers - *Moonshine*, *Deception*, *Absolution*, *Black Mass* and *Daily Bread* - will have been unveiled! We hope you'll agree that the new designs form a much more coherent and modern looking range whilst at the same time paying homage to the history of the beers they represent. We're thrilled with how they've turned out! We also hope you've been loving the new look Devonshire Cat, recently reopened just in time for festive frolics!

Anyway, onto the beers. Kicking off December will be **Destiny** at 4.3%, destined to have a hearty Munich malt backbone, and single hopped with Simcoe at different stages of the brewing process.

Our popular Beer Heads series now has a little **Reveller** to add to its repertoire, another session IPA at 3.9%. This one has a blend

of American Simcoe, Summit and Chinook hops for a cornucopia of fruity flavours including pink grapefruit and passionfruit.

**Surreal Ale #1** is making a return at 4.1%, and the next in our Animal Vengeance series will be out this month too... this time it's the **Crocodile Farmer!** A 4.0% pale, promising to be full snappy Motueka and Rakau hops from down under.

The first beer of 2017 will be a return for **Doctor Morton's Crispy Automatic Duck**, pale and aromatic with a distinctive orangey bouquet. We can also announce that January will witness an evolution of the range which began with *Heathen* earlier this year. Full details still to be confirmed at this stage but expect an exploration into exciting ingredients, forward-thinking beer styles and more of that amazing artwork that makes *Heathen* so instantly recognisable!

Finally, may I wish you all a very beery Christmas and a hoppy New Year!



## STEEL CITY

In 2015, Steel City managed to brew 7 times.

Dave decided this was a frankly ridiculous state of affairs, so with grit, determination and sheer hard work has managed to get 2016's tally to 4...

The final brew of the year is a collaboration with Imperial brewery of Mexborough (well, Dave has emptied their hop store a few times now...), a strong stout featuring Steel City's favourite sugar, dark muscovado. In keeping with the 'Black Metal series' the beer is named **Mayhem**, after the band but also making passing reference to Theresa Mayhem PM (ooh, little bit of politics there...). *Mayhem* weighs in at 6.66%, and is 66.6EBC and 66.6IBU. A little bit more politics in view of America 'Trumping' the UK in the mad decisions stakes, a special version for the Shakespeare is dry-hopped with American and English hops and named **Dumb & Dumber**.

After the death of the minikit earlier in the

year, a borrowed boiler was put to use for **Nigel Fromage's Schokolade-Kirschkåsekuchen**, a Chocolate Cherry Cheesecake Imperial Stout which should end up well over 10% ABV. The brew features lactose, cacao nibs, cherries and shortbread. A pin will be making its way to the Boardwalk for Chris and Kate's grand opening whenever that may be, and the rest will be bottled, available from Beer Central, Hop Hideout and Cotteridge Wines.

Speaking of Black Metal, the long awaited collaboration with Black Metal Brewery is finally happening in December, no details yet apart from it'll be an Imperial Stout.

Finally, Dave and Gazza were pleasantly surprised to be invited to the European Parliament British Pub & Beer Group Xmas reception in Brussels. Unfortunately there's no *Turkey's Voting For Christmas* left to send... Might have to brew a new one and call it 'Economic Suicide'



## JOLLY BOYS

A story of warmth, banter, integrity and grace. And a new Barnsley brewery.

The Jolly Boys' Brewery was established in the snug of a Scarborough pub in 2014. It was more than a distraction, reverie or unobtainable dream. The four friends realised that this was something they wanted to pursue. They savoured this thinking time and punctuated it with laughter, jocular-ity, brotherhood and silence - that comfortable silence where you shake your head and smile. And never want it to end.

The Jolly Boys have spent their working lives contributing via their day jobs to the support of others in society. This moral drive is important to them. Couple this with a love of beer, respect for community and pride in doing a good job, the boys made a life-changing decision: they were going to brew beer.

What more honourable and worthwhile calling could there be?

If The Jolly Boys' Brewery were a person, he'd be the most reliable friend in the world. A listener, a

carer, a mood-lifter, honest and true. He'd also be someone who reacts well to changing times. He'd be non-bureaucratic and free-spirited. He'd also get a round in.

The Jolly Boys are not personality-driven. You'll never see their faces plastered over a website. You might never see their faces at all. They have a band of folk who also want to contribute to the production of great beer. A genuine social network that embodies the same values that you share and operating with warmth, intimacy, trust and banter. The Jolly Boys wear their hearts on their sleeves and their passion in their brews. Welcome to the quiet revolution. The true Northern Powerhouse.

There are currently four brews being produced by The Jolly Boys. One of them, the Jolly Collier Stout, is to be bottled for Christmas. The other three, Jolly Boys' Golden Best, Jolly Blonde and Jolly Collier Porter is available wholesale in casks.

Contact The Jolly Boys' Brewery @jollybrewery or brewers@jollyboys-brewery.co.uk



## EMMANUALES

Tis the saison to be jolly! After the success of last year's packs, we thought we'd do it all over again. This year, we have more gift packs available with a larger variety of beers.

Gift packs include **Ryejoyce** (Red Rye 5.4%) hopped more Nelson Sauvin and Simcoe than you can stuff into a stocking, **Jonah and the Pale** (Transatlantic Pale Ale 5.0%), and one of the following Christmas beers, which will also be available in local bottle shops...

**Ale Mary** (Spiced Barley Wine 8.0%) This ramped up version of last year's *The First Noale* is like drinking a mince pie... only more so!

**Christingle Stout** (Chocolate Orange Stout 4.9%) Everyone likes a Chocolate Orange at Christmas, so here's one in

a bottle! Luscious, sweet and stouty.

**Tis the Saison 20:16** (Saison de Noel 6.6%) A firm favourite from last year, this saison is tart and crammed full of Christmas cranberries.

**Midnight Mass** (Black IPA 7.0%) For anyone who considers themselves a bit of a humbug, we've spruced up this hoppy Black IPA.

And finally, **Nothing But the Blood Orange** (Orange IPA 7.0%) Adorning a few lucky stockings this Christmas, this citrus ale is more fruity than a Christmas pudding.

Order your Christmas gift pack online at [emmanuales.co.uk/christmas](http://emmanuales.co.uk/christmas) and collect them from The Sheffield Brewery Company or the Gardener's Rest.



2006



2016



THE HALLMARK OF A PERFECT PINT

Since launching our first beers in 2006, we have gone from strength to strength, producing a range of award winning real ales.

Ten years later in 2016 here at The Sheffield Brewery Company, we are celebrating our **Ten Year Anniversary** with a brand new look, website and ten monthly specials.

Come and join the celebrations this year by **booking a brewery tour**, **joining our beer club** on the last Friday of the month, or **purchasing our beer** down your local.

**STEEL YOURSELF... SOMETHING'S BREWING!**



Introducing a re-imaged **Seven Hills**: a dry and hoppy pale ale. Available down your local now!



[www.sheffieldbrewery.com](http://www.sheffieldbrewery.com)  
[Twitter](#) [Facebook](#) [Instagram](#) [sheffieldbrewery](#)



Tel. (0114) 272 7256 Email. [sales@sheffieldbrewery.com](mailto:sales@sheffieldbrewery.com)  
 The Sheffield Brewery Co. Ltd, Unit 111, J C Albyn Complex, Burton Road, Sheffield, S3 8BT



## BRITAIN'S BEST REAL HERITAGE PUBS

CAMRA has recently released the new edition of ***Britain's Best Real Heritage Pubs***. This book explores over 250 UK pubs which have real historic significance. This book and its regional companions are the result of over 25 years research by CAMRA to discover pubs that are essentially unaltered and/or have features of national historic importance. Sheffield has four entries: The Bath Hotel, The Grapes, The Sheffield Tap and The White Lion.

These, and many more, are included on the CAMRA Pub Heritage website: [heritagepubs.org.uk](http://heritagepubs.org.uk) On this site, Sheffield has the largest number of entries of any Yorkshire city: Sheffield

17, York 14, Leeds 12.

Sheffield has three pubs which have an historic pub interior of national importance: The Bath, The Sheffield Tap and the Sportsman (Hackenthorpe).

**Dave Pickersgill**



## BAR STEWARDS

The Bar Stewards is a new micropub and bottle shop due to open next year, in the meantime a number of temporary 'preview' openings are taking place on a temporary licence with the venue as a work in progress.

The first of these advertised was the last weekend in October with the pub being spartan but functional with three cask ales - from Blue Bee, Neepsend and Hopjacker - served on gravity direct from the cask full of cans and bottles.

The Bar Stewards can be found on Gibraltar Street, across the road from Shakespeare's pub in one of the new shop units - the whole building has been renovated.

Once the venue is up and running full time there will be a number of hand-pumps dispensing cask beers from a proper cellar along with a number of craft keg beers, quality spirits and cider.



## INN BRIEF

The **Three Tuns** in Sheffield City Centre have a new food menu offering good hearty food, sandwiches and chip butties. On 1st December they are hosting a Blue Bee Brewery tap takeover.

The public beer festival at SIBA BeerX in 2017 will be called 'Beer Alive!' and take place from Friday 17th to Sunday 19th March with a number of changes from previous years. As with the last couple of years, Sheffield Beer Week will again run on the same week that the SIBA conference is in Sheffield.

The **Miners Arms** at Hundall is hosting their Christmas Carol service on 22nd December at 7pm.

The **Howard** in Sheffield City Centre, a Marstons pub, has been closed for a refurbishment, reopening on the 18th November.

Advance notice for those with busy diaries is **Toolmakers** brewery's hospitality room being open and hosting live music on 18th February 2017.

Real Ale, Real Food & Real Fires

## The Old Hall Hotel

A Traditional 16th Century Coaching Inn  
Market Place, Hope, Hope Valley, Derbyshire S33 6RH



f /TheOldHallHotel

@oldhallhope

Homemade Food Served All Day | 6 Cask Marque Ales  
Outstanding B&B | Roaring Open Fires  
Muddy Boots & Dogs Welcome | Friendly Atmosphere



[www.oldhallhotelhope.com](http://www.oldhallhotelhope.com) 01433 620160 [info@oldhallhotelhope.com](mailto:info@oldhallhotelhope.com)

A Pub Done Different

## THE PEAK HOTEL

The Peak Districts' Eccentric Alehouse  
How Lane, Castleton, Hope Valley, Derbyshire S33 8WJ



f /ThePeakHotelCastleton

Find us on TripAdvisor

@peakcastleton

Homemade Food Served All Day | Outstanding B&B  
5 Cask Marque Ales & Large Selection of Craft Bottles  
Muddy Boots & Dogs Welcome | Roaring Open Fires



[WWW.THEPEAKHOTEL.CO.UK](http://WWW.THEPEAKHOTEL.CO.UK) 01433 620247 [INFO@THEPEAKHOTEL.CO.UK](mailto:INFO@THEPEAKHOTEL.CO.UK)





## INN BRIEF

The **Jolly Farmer** at Dronfield Woodhouse is hosting a Christmas charity fundraiser for Chesterfield Macmillan Cancer Centre appeal on 18th December from 4:30pm. This is suitable for all the family with Santa present with gifts for the kids, carol singing, raffle and more.

**On the Edge Brewery** will be hosting their next 9 Pin evening in May 2017.

A new small cafe bar called **Drink Inn** appears to be in the process of being opened on Commercial Street next to Ponds Forge (across from Fitzalan Square tram stop). Nothing appears to have been publically announced at the time of writing.

**Stagecoach** bus are running a special 5 travel all day for a fiver promotion in Sheffield on Saturdays and Sundays until the end of January - perfect for groups doing pub crawls by bus! See [stagecoachbus.com](http://stagecoachbus.com) for details.

## NORFOLK ARMS, GRENOSIDE

From launching the first ever lager to be developed and brewed in Sheffield to opening their first brewery tap in the city, it's safe to say 2016 has been a busy year for Stancill Brewery. However as the year draws to a close, the Sheffield brewery has no plans to put the brakes on just yet, opening a second city based brewery tap at the end of last month.

The Norfolk Arms, located on Penistone Road in Grenoside, is the second pub to be acquired by Stancill Brewery, which opened its doors to the ale loving public after a substantial refurbishment of the much-loved pub.

The £35,000 refurbishment includes a complete overhaul of the interior and exterior of the pub,

a full refurbishment of the bar area, the installation of 14 hand pulled lines and 12 keg lines which will be used to host a changing selection of guest craft beers. The Norfolk Arms is only the second pub in Sheffield to feature the brewery's own *Stancill Lager*: The first first to be developed and brewed in the steel city.

Real ale lovers will be able to sample the full line up of Stancill beers as well as a changing specials range. There are plenty of reasons to visit the Norfolk Arms during the week with plenty of entertainment on offer ranging from its Tuesday quiz night, pizza, pints and prosecco on Wednesday's as well as hosting it's Friday after work club,

which provides offers on selected drinks available at the bar. Street food will be available each Friday and Saturday, available from a changing range of vendors. Visit the pub's Facebook page for more information.

CAMRA members can benefit from a 20% discount on all Stancill beers, making a pint of the good stuff just £2! There's plenty to choose from too, as The Norfolk Arms features the full core line up of Stancill brews, including the award winning *Barnsley Bitter* and *No 7*, as well as *Stancill Pilsner* and lager.

The Norfolk Arms is open Monday to Friday 4pm while 12am and Saturday to Sunday 12pm to 12am.



# THE BEER ENGINE

---



CRAFT BEERS  
SPIRITS  
FOOD

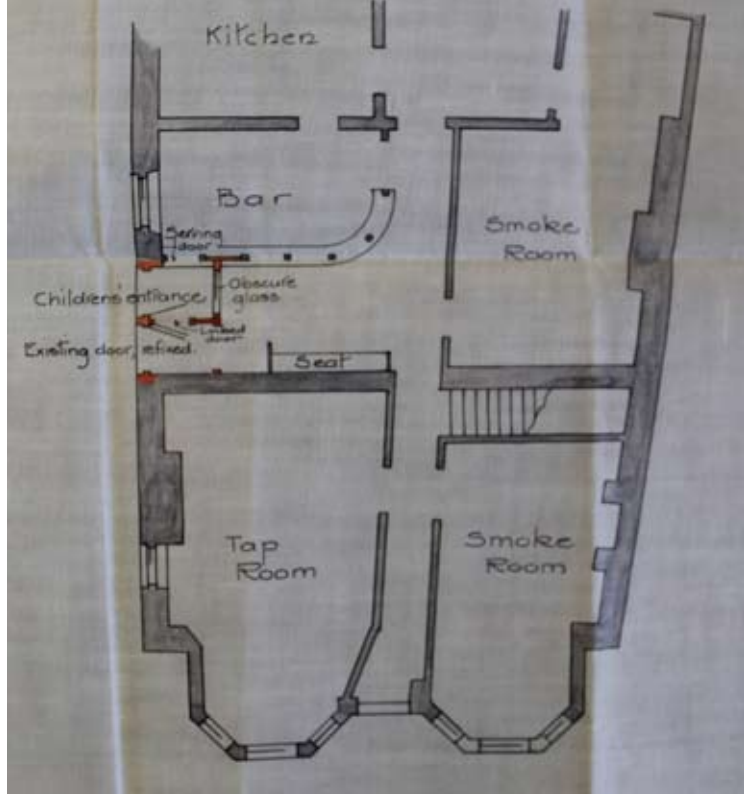
---

17 CEMETERY RD

---

[www.beerenginesheffield.com](http://www.beerenginesheffield.com)

  BeerEngineSheff



## GARDENERS REST

We're proud to announce that the Gardeners Rest Community Society has reached its lower funding target of £100,000 in its effort to take the Gardeners Rest in Neepsend into community ownership following the retirement of Pat and Eddy, the current owners and managers.

We are now in a good position to negotiate grants and loans sufficient to make a competitive bid to buy and preserve the pub for its community of supporters. To this end, we've announced our first stretch target - £50,000, which will enable us to put together a truly competitive offer to the current landlords.

With just under three weeks left to go on our Crowdfunder campaign, we are optimistic that we can reach and even exceed this goal!

**Chris Olewicz**  
Interim Director of Gardeners Rest Community Society

## PUB HERITAGE - LESCAR

The Lescar (Sharrow Vale Road, S11) is possibly unique in that 1909 plans include the addition of a new 'Children's' Entrance' on the side of the building. These include a reference to 'Obscure Glass,' - presumably so that the 'children' could not see into goings-on inside. An earlier 1898 plan indicates a three-roomed pub with a single bar. Additions the following year add a large dining room to the rear of the building.

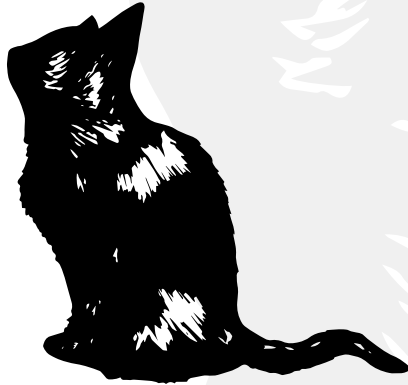
By 1913, the pub was owned by Mappins Masboro Old Brewery Ltd.

1955 plans, for Mappins, indicate that the Dining Room has become a 'Concert Room' and the bar has moved to its current position. The off-sales are behind the bar and the children's entrance has become an entrance into the lounge. At this point it was planned to open out the Smoke Room with the use of RSJs. 1972 Plans indicate that this opening out did not occur. The current floor plan is otherwise identical to that in the 1955 plan.

The pub currently has a lobby entrance, Tap

Room at the front and L-shaped lounge at the rear, both served by a central bar. There is also a separate function room, with own bar. There are some Art Décor features including door fittings and copious wood panelling. The lounge has two fireplaces, one probably original (left) and the other bought-in. The site, itself, was previously a water mill. At the peak, in the 19th.Century, the 10 km length of the River Porter from source to where it joins the River Sheaf in the city centre, had 21 mill ponds serving 19 water wheels.

# THERE'S A NEW CAT IN TOWN



DEVONSHIRE CAT

---

CRAFT BEER   BOUTIQUE WINES & SPIRITS   LOCAL ALES

---

28 lines, 12 hand pulls, and a new cocktail menu  
Fresh locally sourced British menu  
Newly refurbished bar with free hire space

OPENS LATE NOVEMBER

 [devonshirecat](#)  [facebook.com/devcat](#)  [thede Devonshirecat](#)

Find us a whisker away from Division Sreet at 49 Wellington Sreet, S1 4HG (0114) 2796700



# STANCILL

## BREWERY

WISHING YOU A  
VERY MERRY CHRISTMAS  
AND A TERRIFIC 2017!



Beer Line 0114 275 2788 / 07809 427716 [www.stancillbrewery.co.uk](http://www.stancillbrewery.co.uk)

[facebook.com/stancillbrewery](https://www.facebook.com/stancillbrewery) [twitter.com/stancillbrewery](https://twitter.com/stancillbrewery)



# STEP INTO CHRISTMAS WITH STANCILL BREWERY

## Norfolk Arms

8 Penistone Road • Grenoside  
Sheffield • S35 8QG

Tues: Quiz - 9pm

Weds: Pizza, Pints & Prosecco 4-9pm

Fri: After work club 4-7pm

Every Fri & Sat

Nibbles at the Norfolk 4-10:30pm



 [facebook.com/norfolkarmsS35](https://facebook.com/norfolkarmsS35)

 [@norfolkarmsS35](https://twitter.com/norfolkarmsS35)

## Horse & Jockey

250 Wadsley Lane • Wadsley  
Sheffield • S6 4EF

Mon: Jam night - 8pm onwards

Tues: Quiz - 9pm

Thurs: Pizza, Pints & Prosecco 4-9pm

Fri: After work club 4-7pm

Street food most Saturdays

Mid Month Music:

See facebook for details



 [facebook.com/horsejockeyS6](https://facebook.com/horsejockeyS6)

 [@horsejockeyS6](https://twitter.com/horsejockeyS6)

**Both pubs open Christmas Day: 12-3pm**  
**20% CAMRA Discount on all Stancill beers**



## OLD CROWN, LONDON ROAD

Look at our shiny newly repainted pub! And on the inside, it feels like The Old Crown is finally beginning to build up some momentum with live events and an increasingly varied range of real ales.

Recent additions to the bar have been a small re-fit to include *Amstel* and *Estrella* as our premium lagers alongside a *Black Annis* porter from Everards Brewery which people either seem to love or hate, but has been a perfectly wintery pint.

Warming up for the cold, we are shortly going to be mulling our own hot spiced drinks, which you can have either as a boozy version or not.

Throughout December we have a host of amazing events happening - on Sat Dec 3rd Steel City Rhythm and The Unscene; Owl and Mouse with Model Village and Robberie provide a cosy Sunday afternoons music on Dec 4th and on Fri Dec 9th the incredible Martin Bedford brings his 'Kick Out The Jams' night

featuring Zombie Rockers and Iron Sphincter!

Christmas and New Year plans to be equally busy with a Now Then Xmas Disco on Fri 23rd, Chuffin Noise on Mon 26th, Riddimtion on Sat 31st and more being confirmed as we speak so please like our Facebook page or follow us on Twitter for updates. As ever, we would love to hear from any local promoters, bands, djs or performers who would like to come and host an event with us, our pub is your pub!



## BLUE STOOPS, DRONFIELD

The Blue Stoops on Dronfield High Street has now reopened following extensive refurbishment and renovation of this historical building by True North Brewery.

The bar has four hand-pumps serving real ales from True North and guests

along with various keg beers and ciders, a wide selection of gins and other spirits.

Food is served all day in the restaurant area and is family friendly until 8pm with the cooking described as 'Classic British with a modern twist'. There is also a function room and beer

garden.

The pub is open 11:30am to midnight Sunday-Thursdays and until 1:30am on Friday and Saturday nights.

Special events are planned to take place from time to time with the first being a Christmas market on 3rd December.



## HALLAMSHIRE HOUSE

There has been a change of manager at the Hallamshire House following Tom and Becky's departure to go and run the Spireite at Whittington Moor. Now at the helm of the Hallamshire House is Thomas Lunn. It is still a Thornbridge tap and there are lots of interesting things planned during December.

First week of December will be their annual 'Stout Week' featuring a range of Thornbridge Stout & Guest stouts. Including St.Petersburg & Fika Casks. They will also be doing special pours of the aged Thornbridge Hall specials, including a range of speciality stouts that have been aging in the cellars for over 2 years!

The week will conclude with live music on the Sunday evening from 9pm-late.

Saturday 3rd December is the 'Secret Garden' Party. Featuring DJs from stalwart party night Planet Zogg and Street food offering Himalayan style dishes called MoMo's from 'Freak Street Food'. This is an awesome daytime/evening party which kicks off from 5pm.

Saturday 17th December is their Rawk & Roll X-Mas party with Roaming Son playing 9pm-late. This is in collaboration with Honey Bee's Blues Club.





# 12 Days of Christmas at...

## BANNER CROSS

THUR 22nd	Interactive Quiz & Last Man Standing
FRI 23rd	It's mad Friday, works out for Christmas, join us for a drink
Christmas Eve	Open all Day until Late - The only place to be this Christmas
Christmas Day	Come and join Dave, Julie and the Team for a few - Open 12 - 3 pm
Boxing Day	Live Football   until Late.
TUE 27th	Review of the Year Quiz £50 in drinks vouchers to be won.
WED 28th	Dave & Julie's Thank You Party - Just to say thank you for your custom. LIVE MUSIC with a Tribute to Michael Bublé 
THUR 29th	Interactive Quiz £50 in Drinks Vouchers to Winner, plus Last Man Standing.
FRI 30th	LIVE MUSIC with SWANSONG - Zeppelin, Joplin, The Stones Don't miss this amazing band
New Years Eve	Out with the Old and in with the New. Let 2017 in with the team at The Banner Cross. Why not bring some sandwiches or left overs and make a night of it.
New Years Day	Happy new Year from everyone at The Banner Cross. You know what they say. "What makes ya bad makes ya better"
Jan 2nd 2017	Live Football  



## LOCAL TAPS

In part one we illustrated the best places to drink beer from some of our local breweries including Abbeydale, Blue Bee, Bradfield, Drone Valley, Exit 33, Hop Jacker, Kelham Island, Little Critters, Neepsend, Sheffield Brewery Co and True North. We hope you managed to get to some of those pubs and enjoy some great local beers!

Now for part two we pick up on some remaining local brewers.

### Emmanuales

Emmanuales doesn't have a brewery tap as such - they cuckoo brew at Sheffield Brewery however so the odd cask may turn up at their tap, the Gardeners Rest at Neepsend. The majority of their beers go into

bottle, so try Beer Central in the Moor Market, Hop Hideout on Abbeydale Road, Archer Road Beer Stop at Millhouses or Beer Stop at Dronfield.

### Fuggle Bunny

Again, no official brewery tap although their beers do regularly appear locally. The best option however is to drink from the source - the brewery opens to the public every Friday evening with take outs available! The brewery is about 10 minutes walk from Halfway tram terminus or bus 71 passes outside.

### Hope Valley

You probably won't have heard of this brewery unless you have stayed in the YHA Youth Hostel located

between Hope and Castle-ton where it is based in an outbuilding. The manager is the brewer and he produces small batches on an as and when basis. The only place that serves the beer in the Youth Hotel itself - you will notice a refreshment counter joining the reception desk when you check in and that it has a handpump. The beer is available at selected events and in the dining room from time to time.

### Intrepid

Another brewery located in the Peak District's Hope Valley, this one is at Brough near Bradwell. A range of regular beers include a Blonde, American Pale, Stout, Porter and Bitter with suitable adventure type names are brewed along with regular specials brewed that are either interpretations of world beer styles or collaborations with local organisations.

The local pub that regularly stocks their beer is the Anglers Rest in Bamford, a community owned pub that hosts not just a bar but a cafe and post office!

### Lost Industry

A brewery that likes to experiment with all sorts of beer styles and ingredients with beers released in bottle, in cask and in keg. They don't have a regular tap although there are regular bottle stockists, look out for them turning up on draft now and again

in the various craft orientated bars.

### Mitchells Hop House

Mitchells again doesn't have a regular tap, however the brewery is attached to an off licence where you can buy their bottled beers. You will find it at Meadowhead shops (buses 24/25/43/44/75/X17). Their beers do however turn up on cask now and again at the New Bar-rack Tavern near Hillsborough.

### North Union

North Union doesn't normally produce cask beer, their quality craft beers are however available in bottles in most of the specialist beer shops around our area (such as Beer Central, Turners, Hop Hideout, Dronfield Beer Stop, Archer Road Beer Shop etc). They also turn up on keg now and again.

### On the Edge

This is a nano brewery located in the owners kitchen! There is no regular tap house although the beers do turn up from time to time at the Broadfield, however look out for their 9-pin events advertised. They take place about three times a year at the Old Junior School on South View Road, Sharrow, featuring a pin each of 9 different interesting beers they have recently brewed.

### Regather

This co-operative organi-



sation has a small brewery that is used for special events including brewing courses and beer & food matching evenings, however a limited quantity is also brewed for bottles to sell. Look out for the events at Regather Works in Nether Edge advertised.

## Sentinel

The Sentinel Brewhouse & Bar is more a brewery with a bar rather than a brewpub, however it is a great venue to go and drink fresh beer and grab a bite to eat to go with it. You'll find it on Shoreham Street between BBC Radio Sheffield and the inner ring road (buses 1, 1a, 24, 25 and 56 stop on the other

side of the dual carriage-way).

## Stancill

Stancill have two of their own pubs - the Horse and Jockey at Wadsley and the Norfolk Arms at Grenoside. Both are recently refurbished, showcase their beer range and are community orientated and have regular events. See their advert for more details.

## Steel City

Steel City is a part time cuckoo brewing operation consisting of Dave Szwejkowski turning up at Toolmakers Brewery and brewing something interesting at a frequency of approximately once every

when he can be bothered. Most of his beers are the kind of hop monsters he enjoys drinking but chilli beers and other crazy experimental beers have also been produced and always to a high standard. Look out for his beers in the Forest and Shake-speares.

## Tapped

The Sheffield Tap bar on platform 1b of Sheffield railway station probably needs no introduction. Its the old first class refreshment rooms that stood empty and near derelict for a number of years before Pivovar restored them to the full ornate glory, opened it as a real ale and craft beer bar with

its own in house brewery. There is always a range of their beers on the bar at the Tap, additionally there is usually a Tapped beer on the bar at the Hillsborough Hotel.

## Toolmakers

The Forest on Rutland Road near Neepsend is the dedicated tap owned by Toolmakers brewery, with the brewery located just around the corner. The brewery is in an old toolmakers workshop, hence the name, brewing a variety of beers named after the theme. The Forest pub is a traditional local with two rooms, friendly atmosphere and reasonable prices.

# OLD Nº7

MARKET HILL, BARNSLEY. S70 2PX

OFFERING AN EXCITING RANGE OF CASK ALES,  
CONTINENTAL BEERS, PILSNERS AND CIDERS



OldNo7Barnsley



@OldNo7Barnsley

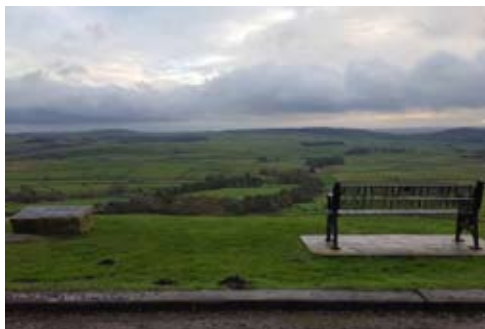
WWW.ACORN-BREWERY.CO.UK



## PEAKS PUB TOUR

On Saturday 12th November a minibus full of local CAMRA members visited a number of Peak District pubs in our branch area. The final destination was our District Pub of the Season award winner, the **Three Stags Heads** at Wardlow Mires

(pictured above), before then we stopped off at the **Anglers Rest** community pub in Bamford; the **Queen Anne** at Great Hucklow; the **Barrel** at Bretton (which included a fantastic view, pictured below) and the **Miners Arms** in Eyam.



## A GRAND DAY OUT

In a new series our beer correspondent reports on his journeys in search of beer festivals, all reached on public transport in a day from Sheffield.

After the vigours of the highly enjoyable Sheffield Beer & Cider Festival, a review of the excellent RURAL (Rural Real Ale Drinkers) *In The Sticks* publication revealed a wealth of accessible pub beer festivals in North Notts and Derbyshire over the Halloween weekend.

After studying various travel and pub websites, the CAMRA Good Beer Guide and the weather forecast, a day out was planned for Friday 28th October and all without a free travel pass in sight. Leaving home at 8am for an early morning shopping trip to Crystal Peaks, I boarded the 9.20 TM Travel service from there to Kiveton Park rail station for a train to Worksop. Arriving about 10.20 allowed ample time for a healthy fry-up in the Railway Café on the platform.

The **Mallard** public house on the opposite platform opened promptly at 11am. This is a lovely pub with a micro bar feel to it with just 6 tables in the bar, except that in addition

to the 4 hand pumps a full drinks menu is available. For their quarterly festivals the cosy downstairs bar is also open serving beers on both hand pump and direct from the cellar. In total 16 beers and 4 traditional ciders were available and I tried beers from Mad Dog, Drygates, Reunion, Wylam, Hopstuff and one from their own brewery, Double Top. Quality was very good throughout. Their next festival is scheduled to start at 11am on Thursday 26th January – go to it!

There then followed a short walk to the **Grafton Hotel** who were also advertising a Halloween Beer Festival starting the previous day, but unfortunately (unlike the Mallard), they had chosen to adhere to their normal Friday opening time of 2pm, so were closed when I visited.

Back on the train to Sheffield now and a quick change for a Cross Country service to Derby using the invaluable Derbyshire Wayfarer ticket. There was then a quick bus ride from the station into Derby Bus Station to pick up another service to Milton for a short walk to the **Holly Bush Inn** at Makeney, a Grade 11 listed 17th century inn of great

character and significance and one which I had not visited before. A separate stillage in a normally closed off room housed the festival beers and the breweries I tried were – Hairy Brewers (a new brewery from a nearby village), Oakham, Dancing Duck and G2 (from Ashford, Kent).

Time was pressing on so another bus ride was needed into Belper to visit **Arkwright's Bar** Halloween beer festival. In addition to the main bar, a stillage had been erected behind it and beers sampled were from Manning, Abstract Jungle, Dhillons, Brewshed and another from Hairy Brewers. Unlike the Holly Bush, this is a fairly new and modern smaller pub nestled in the centre of Belper and was very popular with drinkers.

On leaving the pub, a short cut brings you to Belper rail station in 2 minutes, just in time for the hourly service back to Derby. No time for a drink in Derby on this occasion as a Sheffield bound train was just approaching. As often seems to be the case with evening trains that terminate in Sheffield the controllers seems to take great pleasure in putting the train at the very end of platform 8 and as far away as possible from the way out and today was no exception, even though the station was devoid of other trains.

Anyway, there was just enough time for a quick drink in the **Old Queens Head** before the bus home.

## YOUR PUB NEEDS YOUR VOTE!

### Sheffield Pub of the Month

Our Pub of the Month award is a bit of positive campaigning, highlighting local pubs that consistently serve well kept real ale in friendly and comfortable surroundings.

Voting is your opportunity to support good, real ale pubs you feel deserve some recognition and publicity.

All CAMRA branch members are welcome to vote at branch meetings or on our website.

It's not one pub against another, simply vote YES or NO as to whether you think the pub should be

PotM. If we get enough votes in time we will make the award.

Nomination forms are available at branch meetings and on the website. The pub must have been open and serving real ale for a year and under the same management for 6 months.

Winners compete alongside our *Good Beer Guide* entries for branch Pub of the Year, the winner of which is entered into the national competition.

The list of nominees includes which buses to take if you fancy a trip to try them out:

### District Pub of the Season

The District Pub of the Season award programme runs alongside our established Pub of the Month awards to encourage more people to visit and recognise the Derbyshire pubs in our branch area, many of which require that extra effort to get to because of their rural location. Many of these pubs are in picturesque Peak District villages, in contrast there are some urban community pubs in towns such as Kil-lamarsh too.

This awards works slightly differently to Pub of the Month - we get a number of nominations from members at the start of the season then open it up to all the membership to vote for their favourite, which is awarded at the end of the season.

## NOMINEES

### Broadfield

Abbeyle Road (buses 10, 10a, 75, 76, 86, 96, 97, 98, 218)

### Doctors Orders

Glossop Road (buses 6, 120, 271)

### Old Queens Head

Sheffield City Centre (any tram to Fitzalan Square; any bus to Interchange/Flat Street)

### Ship Inn

Shalesmoor (buses 57, 81, 82)

### Stags Head

Sharrow (bus 4, 4a)

[sheffieldcamra.org.uk/potm](http://sheffieldcamra.org.uk/potm)

## NOMINEES

### Eyre Arms

Hassop (bus 275 Sheffield-Bamford-Bakewell)

### Moon Inn

Stoney Middleton (bus 65 Sheffield-Buxton)

### Packhorse Inn

Little Longstone (bus 173 Castleton-Bakewell)

### Red Lion

Litton (bus 65 Sheffield-Buxton)

### White Hart

Bradwell (bus 271/272 Sheffield-Castleton)

[/pots](http://pots)



## ANOTHER FINE FEST YOU GOT US INTO

Another successful festival! Our annual beer and cider festival, held for the third time at Kelham Island Museum, proved as popular as ever, and attracted a record number of visitors. Around 6500 visitors drank over 20,000 pints at the 4 day Festival and despite an increase in capacity thanks to our extra room, we had to operate a one-out-one-in policy on the door at times during Friday and Saturday evenings. Apologies to anyone who had to queue, and we will be looking at ways to increase capacity again for next year.

As always the festival was run and staffed entirely by volunteers. 151 people very kindly worked a total of 3285 hours and as a thank-you, a festival workers trip to Salford is taking place. Report to follow in the next issue.

After two frantic days of building stillages, assembling bars and stalls, then positioning, venting and tapping over 300 beers and ciders, the festival was ready to roll.

Proceedings got under way on Wednesday evening with the Mistress

Cutler, Dr Julie Edwards presiding over the official opening, before the Beer Of the Festival tasting panels began. Gold was won by North Yorkshire brewery Bad Co's Dazed & Confused, Silver was Citra Star from Anarchy Brew Co of Northumberland, and Bronze was Paxton from Chatsworth's Peak Ales.

The Sheffield Beer Of The Festival was Rollabout Stout from Neepsend Brew Co, Silver was Little Critter's C Monster and Bronze was Azimuth from On The Edge Brewery.

The potentially controversial introduction of a Craft Keg bar at this year's festival actually proved to be a big hit, and featured CAMRA approved keg beers from a number of local breweries amongst others. Also popular were the international bottle bars which were offering a variety of beers from around the world.

For the entertainment, Thursday saw Northern Soul band The Basement getting the dancing underway, which continued with Friday night's rock n roll set from Vegas 6. Friday

is also traditionally Fancy Dress night at the festival, and a number of volunteers worked their shift in a variety of sci-fi themed costumes.

Saturday featured the usual, and very popular, appearance by the Loxley Silver Brass Band, and rockabilly band The Slingshots closed proceedings.

Visitors were treated to the sight of the Museum's massive River Don Steam engine in operation at various times. A selection of excellent food stalls kept everyone fed, and feedback from visitors as they left was that everyone had a great time. All that was left was for the hard-working Sunday Team to dismantle everything and return it into storage. 9 hours of physical graft rewarded with free food and drinks in the closed Shop.

This year's festival charity was the Children's Hospital Charity, proceeds from the beer mat collectors packs, quiz, collection buckets and donations of unused beer tokens went to this charity, raising almost £1,600.

Extra thanks must also

go to all our Sponsors, in particular our Main Sponsors, Bradfield Brewery, for sponsoring the Millowners Arms and the Pint glasses; Blue Bee Brewery for sponsoring T-shirts; Camerons Head Of Steam for sponsoring some of the Half Pint glasses, and SkyBet for sponsoring the remaining half pint glasses and also T-shirts.

We hope that everyone who came had a great time and if you didn't make it we hope you've seen enough to convince you to come next year.

### Thanks...

The organisers of the recent Steel City Beer & Cider Festival would like to thank the following for donating items to the festival tombola and to sell for the festival charity – The Sheffield Children's Hospital:- Tom & Brigitte (Hillsborough Hotel), Steve Cook, Richard Butler, Chris (Shakespeares), Tom (Portland House), Pete Gardener, Josh (Blue Bee Brewery), Dave Williams, Duncan & Diane (Fat Cat), Kelham Island Brewery, Sarah Mills, Andy Stephens (Reet Ale Pubs), Hazel & Rodney Sprigg, Andy & Julie Lee, Trevor & Lewis (Kelham Island Tavern), Christy (The Ship Inn), Sentinel Brewery, Mike Humphreys, Mike Hensman, Abbeydale Brewery, North Union Brewery and everyone who donated anonymously. Apologies if we have missed anyone.





## 2017 - HELP MAKE THE MAGIC

With our 42nd annual festival over and the wash up meeting conducted thoughts now turn to planning number 43 for October 2017.

The festival is organised, managed and staffed entirely by passionate volunteers who care enough about putting on an event for celebrating good ale and cider in Sheffield and sharing CAMRA's values with the wider drinking public.

With the festival growing each year, it takes more organising and more focus on individual areas and along with some of the old guard wanting to

'retire' and take a less active role we are keen to see new people join the organising committee.

The planning meetings take place on the third Tuesday of each month at 8pm with some business conducted on email inbetween. If you are interested in getting involved - or even if you aren't sure and want to find out more - you are welcome to come down to a meeting. The first one will be in January when the committee will be appointed, however note there are still opportunities to help with things even if you aren't in a committee role.

## FESTIVAL GUIDE

### OCTOBER

#### Star Inn, Huddersfield

**Wed 23 – Sun 27 Nov**

The Star at Folly Hull, Huddersfield hold one of their regular beer festivals with a temporary festival bar adding to the choice in this cosy pub. Food is also available.

#### Commercial, Chapeltown

**Thu 24 – Sun 27 Nov**

One of the regular beer festivals at the 'Commie' which sees a few extra handpumps added to the bar and a list of beers not previously featured at the pub cycled through over the weekend. A simple bar food menu is available including home made pies. Bus 265 (Sheffield-Barnsley) passes the front door of the pub, Chapeltown station and various other bus routes are 5 minutes walk away.

#### A Firkin Beer Festival Part 3

#### Picture House Social

**Thu 24 – Sun 27 Nov**

It's back, a stillage full of interesting beers on cask and keg in the games room of Picture House Social with entertainment Friday and Saturday night. Thursday 5pm - 12am, Friday 4pm - 3am, Saturday 12pm - 3am and Sunday 12pm - late. Free entry. Buses 75, 76, 86, 96, 97, 98 and 218 stop outside.

#### Peddler Market

**Fri 2 – Sat 3 Dec**

The usual monthly event open Friday evening and Saturday afternoon/evening featuring a variety of street food traders, craft stalls, art, music and a number of bars with a range of real ales and craft beers available. The featured breweries change each month. The Peddlers Venue is at 92 Burton Road, Neepsend, on bus routes 7/8 or a short walk from Shalesmoor tram stop. Sheffield Brewery which is just across the road also open on the same evenings for their Beer Club tap session. Both events offer free entry. [peddlermarket.co.uk](http://peddlermarket.co.uk)

#### Manchester CAMRA

**Thu 19 – Sat 21 Jan**

The annual Manchester Beer & Cider Festival returns to Manchester Central (previously known as G-Mex) for the second year, a grand former rail station, with over 600 beers, ciders and perries. It is open noon to 10:30 pm Thursday and Friday, noon to 7pm on Saturday. Deansgate rail station is just a few minutes walk from the venue. See [www.mancbeerfest.uk](http://www.mancbeerfest.uk) for more information.

#### Derby CAMRA Winter Ales & Cider

**Wed 15 – Sat 18 Feb**

The Derby winter festival is in the Derby College Roundhouse building located at the rear of the

railway station, open from 5pm to 11pm Wednesday then 11am to 11pm the rest of the week. Regular trains run from Sheffield to Derby, journey about 35 minutes. [derbycamra.org.uk](http://derbycamra.org.uk)

#### CAMRA National Winter Ales & Cider

**Tue 21 – Sat 25 Feb**

Held in the historic St Andrews & Blackfriars halls in Norwich. For more details. Direct trains run hourly from Sheffield to Norwich, cheaper train tickets are available if booked in advance. [nwaf.org.uk](http://nwaf.org.uk)

#### Rotherham Magna Real Ale & Music

**TBC March 2017**

This big charity event fea-

turing around 250 real ales on handpump plus cider and perry, wine, food and live music in an old steel works is expected to be back for 2017 after a year off. Watch this space!

#### SIBA – Beer Alive!

**Thu 16 – Sat 18 Mar**

This is the new name for the Siba BeerX Festival of beer at Ice Sheffield. More information nearer the time. Ice Sheffield is near the Arena tram stop.

#### Three Valleys

**Sat 3 Jun**

This popular annual event spread across a number of pubs and clubs in the Dronfield area with a free bus service from Dronfield station is back again.

**300 Ales, Ciders & Perries**

Live Bands Food Stalls

**13th DERBY WINTER ALE FESTIVAL 2017**

**15th to 18th FEBRUARY**

Wednesday	15th	5pm - 11pm
Thursday	16th	11am - 11pm
Friday	17th	11am - 11pm
Saturday	18th	11am - 11pm

**FREE Entry to CAMRA Members**

at the **ROUNDHOUSE**, Pride Park, Derby DE24 8JE

[www.derbycamra.org.uk/winter-beer-festival](http://www.derbycamra.org.uk/winter-beer-festival)

TOM, BRIGITTE AND THE TEAM WELCOME YOU TO...

# THE HILLSBOROUGH HOTEL

54-58 LANGSETT ROAD, SHEFFIELD, S6 2UB - 0114 232 2100 -  

## 6 REAL ALES

LOCALLY AND NATIONALLY SOURCED

HOME-COOKED, LOCALLY SOURCED

## FOOD

JIM'S TUESDAY NIGHT

## QUIZ

\* \*  
CHRISTMAS  
MENU NOW  
AVAILABLE  
\* \*

## LIVE MUSIC

DECEMBER 3<sup>RD</sup>

THE SLINGSHOTS

DECEMBER 10<sup>TH</sup>

RED RIVER  
REBEL

DECEMBER 17<sup>TH</sup>

AMELIE CARTER  
BAND

## FOLK MUSIC

DECEMBER 11<sup>TH</sup>

HOSTED BY

MCDONALD BROS.  
AND DAVE YOUNG  
AND FRIENDS

8-ISH START

\* DECEMBER 18<sup>TH</sup> \*  
ST. BART'S CHURCH  
CHRISTMAS CAROLS

\* DECEMBER 19<sup>TH</sup> \*  
STANNINGTON BRASS BAND

## The Angler's Rest

District Pub of the Year

6

years

2011 - 2016!

Graham & Beryl Yates.

Millers Dale, Buxton  
Derbyshire SK17 8SN

Tel: 01298 871323

[www.theanglersrest.co.uk](http://www.theanglersrest.co.uk)



## BRANCH DIARY

### SHEFFIELD

#### INFO AND BOOKINGS:

[social@sheffieldcamra.org.uk](mailto:social@sheffieldcamra.org.uk)

#### Festival workers Salford trip

10:30am Sat 26 Nov

A day out to some great beery venues in Salford with free travel organised to say thankyou to those who volunteered at our recent beer festival (note a £10 deposit is payable at the time of booking your seat, refunded on board when you turn up). The bus will depart from the Old Queens Head by Sheffield Interchange.

#### Branch meeting

8pm Tue 6 Dec

The usual monthly formal members get together to discuss branch busi-

ness; share pub, club and brewery news and catch up on what is happening in the campaign. The venue is the West Street Alehouse in Sheffield City Centre. (note the venue may change)

The venue is next to City Hall tram stop and buses 51, 52, 52a, 95, 120.

#### Branch Christmas Dinner

6:30pm Sat 10 Dec

The annual get together for a beer and a bite to eat. Please book your place in advance with our social secretary, deposit and menu choices required at time of booking.

#### Kelham Island Merry Christmas Pub Crawl

2:30pm Sun 18 Dec

A pub crawl jointly with members of Rotherham and Doncaster branches. We meet them at the Sheffield Tap then head down to the Kelham Is-

land area. More details to be confirmed.

#### Branch meeting

8pm Tue 3 Jan

The usual monthly formal members get together to discuss branch business; share pub, club and brewery news and catch up on what is happening in the campaign. The venue this month is the Harlequin on Nursery Street. Get there on buses 3, 7, 8, 83, 83a)

#### Whittington Moor pub potter

8pm Fri 13 Jan

Whittington Moor, on the way to Chesterfield has a trio of good beer pubs – the Spireite, which is linked to Hopjacker Brewery, the Derby Tup which is owned by Castle Rock Brewery and run by the same person as Pigeon Fishers Brewery and the Beer Parlour – a micropub that has

**TRY A TASTE  
of  
TRADITION**

Farmers Ales from Bradfield Brewery

On-Site Brewery Shop open Monday - Saturday 10am until 4pm.

info@bradfieldbrewery.com • 0114 2851118 • [www.bradfieldbrewery.com](http://www.bradfieldbrewery.com)

Bradfield Brewery Limited, Watt House Farm, High Bradfield, Sheffield, S6 6LG

Visit our page on Facebook or follow us on Twitter for the latest news and offers.



Available  
NOW!

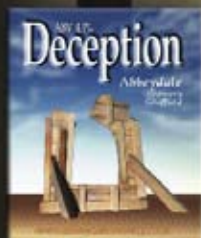


*A Champion Beer from Sheffield*  
**DECEPTION**

ABV 4.1%

*A pale beer, made with fabulous  
Nelson Sauvin hops.*

— ABBEYDALEBREWERY.CO.UK —



*There's nothing more social than  
beer! — Find us on*



**UNTAPPO**

## The Rising Sun

471 Fulwood Road, Sheffield, S10 3QA. Tel. 0114 2303855

### Community Pub

*Showcasing 13 cask ales plus craft  
keg beers and cider fantastic  
homemade pub food!*



**Now Fully Open!**

**Serving food seven days a week!**



*There's nothing more  
social than beer!*

ABBEDALEBREWERY.CO.UK



## BRANCH DIARY (CONTINUED)

grown and offers a changing range of beers!

We'll be joining our friends from Dronfield CAMRA for this social who are commencing their evening in the Chesterfield Arms then working their way back to Dronfield via Whittington Moor using the 43 bus. We're catching the X17 bus from Sheffield Interchange at 19:35 which arrives at Whittington Moor for about 8pm, returning on the 43 bus at 22:08, due back in Sheffield at 11pm.

### Festival planning meeting

**8pm Tue 17 Jan**

We start work planning our 43rd annual Steel City Beer & Cider Festival, due to take place at Kelham Island Industrial Museum in October. If you are interested in being part of the organising committee or helping out in any other way please come along to this meeting.

### Beer Matters distribution and committee meeting

**8pm Tue 24 Jan**

If you have signed up for a magazine delivery run, come along to the Rutland Arms on Brown Street and collect your supply of the February issue and enjoy a beer with other distributors.

If the pubs you frequent are in our area but don't receive copies, why not sign up as a distribution volunteer?

### Branch meeting

**8pm Fri 3 Feb**

The usual monthly formal members get together to discuss branch business; share pub, club and brewery news and catch up on what is happening in the campaign. The venue this month is Mitchell's Wine Merchants & Brewery at Meadowhead

(TBC). (buses 24, 25,43, 44,75,X17 will get you there).

## DRONFIELD

### INFO AND BOOKINGS:

Nick Wheat

[socials@dronfieldcamra.org.uk](mailto:socials@dronfieldcamra.org.uk)

### Doncaster train trip

**6pm Fri 25 Nov**

Train trip to pubs in Doncaster. Meet at Dronfield station for 18:02 train.

### Dronfield potter

**7pm Fri 9 Dec**

Potter around pubs in Dronfield town centre. Meet at the Victoria at 7pm.

### Branch meeting

**8pm Tue 13 Dec**

Blue Stoops, Dronfield High St.

### Branch meeting

**8pm Tue 10 Jan**

The Brook, Troway.

### 43 bus crawl

**Fri 13 Jan**

Wander around Whittington Moor. Itinerary TBC - check website for details.

### Branch meeting

**8pm Tue 14 Feb**

Victoria, Dronfield.

## COMMITTEE

### Kate Major

Chair

[chair@sheffieldcamra.org.uk](mailto:chair@sheffieldcamra.org.uk)

### Louise Singleton

Vice Chair

Beer Festival Organiser

[festival@sheffieldcamra.org.uk](mailto:festival@sheffieldcamra.org.uk)

### Richard Short

Secretary

[secretary@sheffieldcamra.org.uk](mailto:secretary@sheffieldcamra.org.uk)

### Tony Kennick

Treasurer

[treasurer@sheffieldcamra.org.uk](mailto:treasurer@sheffieldcamra.org.uk)

### Andrew Cullen

Membership Secretary

[membership@sheffieldcamra.org.uk](mailto:membership@sheffieldcamra.org.uk)

### Paul Crofts

Press Officer

Beer Matters Advertising

[press@sheffieldcamra.org.uk](mailto:press@sheffieldcamra.org.uk)

### Dave Pickersgill

Pub Heritage

[pubheritage@sheffieldcamra.org.uk](mailto:pubheritage@sheffieldcamra.org.uk)

### Sarah Mills

Cider Officer

### Mark Boardley

### Patrick Johnson

Social Secretaries

Pub Officers

[social@sheffieldcamra.org.uk](mailto:social@sheffieldcamra.org.uk)

### Matt Nedved

Young Members Contact

### Alan Gibbons

Pub of the Year and Good Beer Guide Coordinator

[potm@sheffieldcamra.org.uk](mailto:potm@sheffieldcamra.org.uk)

### CAMRA (National)

230 Hatfield Rd, St Albans, Herts, AL1 4LW

[www.camra.org.uk](http://www.camra.org.uk)

01727 867201

# A Campaign

# of Two Halves



## Join CAMRA Today

**Complete the Direct Debit form and you will receive 15 months membership for the price of 12 and a fantastic discount on your membership subscription.**

Alternatively you can send a cheque payable to CAMRA Ltd with your completed form, visit [www.camra.org.uk/joinus](http://www.camra.org.uk/joinus) or call **01727 867201**. All forms should be addressed to the: Membership Department, CAMRA, 230 Hatfield Road, St Albans, AL1 4LW.

### Your Details

Title \_\_\_\_\_ Surname \_\_\_\_\_

Forename(s) \_\_\_\_\_

Date of Birth (dd/mm/yyyy) \_\_\_\_\_

Address \_\_\_\_\_

Postcode \_\_\_\_\_

Email address \_\_\_\_\_

Tel No(s) \_\_\_\_\_

### Partner's Details (if Joint Membership)

Title \_\_\_\_\_ Surname \_\_\_\_\_

Forename(s) \_\_\_\_\_

Date of Birth (dd/mm/yyyy) \_\_\_\_\_

Email address (if different from main member) \_\_\_\_\_

Direct Debit Non DD

Single Membership £24 ☐ £26 ☐  
(UK & EU)

Joint Membership £29.50 ☐ £31.50 ☐  
(Partner at the same address)

For Young Member and other concessionary rates please visit [www.camra.org.uk](http://www.camra.org.uk) or call **01727 867201**.

I wish to join the Campaign for Real Ale, and agree to abide by the Memorandum and Articles of Association

I enclose a cheque for \_\_\_\_\_

Signed \_\_\_\_\_ Date \_\_\_\_\_

Applications will be processed within 21 days

01/15

**Campaigning for Pub Goers  
& Beer Drinkers**

**Enjoying Real Ale  
& Pubs**

**Join CAMRA today – [www.camra.org.uk/joinus](http://www.camra.org.uk/joinus)**



### Instruction to your Bank or Building Society to pay by Direct Debit

Please fill in the whole form using a ball point pen and send to:

**Campaign for Real Ale Ltd, 230 Hatfield Road, St Albans, Herts AL1 4LW**

**Name and full postal address of your Bank or Building Society Service User Number**

To the Manager Bank or Building Society

Address

Postcode

**Name(s) of Account Holder**

**Bank or Building Society Account Number**

**Branch Sort Code**

**Reference**



This Guarantee should be detached and retained by the payer.

### The Direct Debit Guarantee

- This Guarantee is offered by all banks and building societies that accept instructions to pay by Direct Debit.
- If there are any changes to the amount, date or frequency of your Direct Debit The Campaign for Real Ale Ltd will notify you 10 working days in advance of your account being debited or an otherwise agreed. If you request The Campaign for Real Ale Ltd to collect a payment, confirmation of the amount and date will be given to you at the time of the request.
- If an error is made in the payment of your Direct Debit by The Campaign for Real Ale Ltd or your bank or building society you are entitled to a full and immediate refund of the amount paid from your bank or building society.
  - If you receive a refund you are not entitled to, you must pay it back when The Campaign for Real Ale Ltd asks you to.
- You can cancel a Direct Debit at any time by simply contacting your bank or building society. Written confirmation may be required. Please also notify us.

### FOR CAMPAIGN FOR REAL ALE LTD OFFICIAL USE ONLY

This is not part of the instruction to your Bank or Building Society

Membership Number

Name

Postcode

### Instructions to your Bank or Building Society

Please pay Campaign for Real Ale Limited Direct Debits from the account detailed on this instruction subject to the safeguards assured by the Direct Debit Guarantee. I understand that this instruction may remain with Campaign for Real Ale Limited and if so will be passed electronically to my Bank/Building Society.

Signature(s)

Date

# AWARD WINNING BEERS AND MUCH MORE...

## BREWERY TOUR

Wednesday and Friday at 3pm, booking essential call 01629 815 999.

Adults £7.50, £3 (10-17 years), under 10s free. Price includes the tour, samples of Award Winning Beers and a branded glass to take home.

(Sorry under 5s are not permitted in the brew house).



**Thorncroft**  
B R E W E R Y

GIFT VOUCHERS for the shop and for brewery tours are available on-line.



## BREWERY SHOP

Open Monday to Friday, 9am-4.30pm and on Bakewell Farmers' Market days (last Saturday of the month) 10am-2pm, selling bottled beers, mini casks, clothing and branded gifts.

*Shop online:*

[www.thorncroft.co.uk/shop](http://www.thorncroft.co.uk/shop)



Riverside Brewery, Buxton Road, Bakewell DE45 1GS  
T: 01629 815 999 [www.thorncroft.co.uk](http://www.thorncroft.co.uk)